

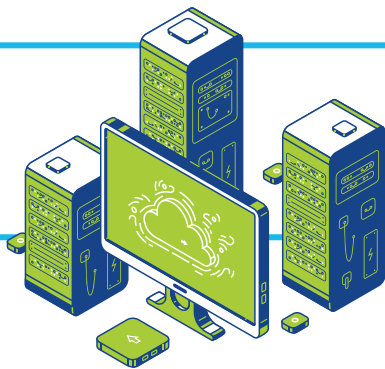


METSI

Cisco Hyperflex to Nutanix Migration

Advisory and Planning Workshop

Deliver your migration from Cisco Hyperflex to Nutanix storage solutions in shorter timeframes and with less impact to your critical business services.




HyperFlex

Learn from the experts with a proven track record in Nutanix migrations, streamline the planning process, and realise the value from your infrastructure investments sooner.



In this consultant-lead workshop your engineering and application teams will learn what are the options and best practices for typical migration scenarios (combinations of storage, hypervisor and management technologies).

Metsi will deliver valuable insights into the planning process and technical design considerations that will influence the migration strategies for different applications and services. Your engineering teams will learn about the migration toolsets that are available and further options to automate the process, and Metsi will highlight the common pitfalls experienced with migrations to significantly reduce the risk to your applications and business.

Finally, in the workshop Metsi will start to explore your application landscape to help make early recommendations on a migration approach and roadmap to migration success.

Metsi Technologies is a recognised Cisco Partner with expertise in Hyperflex installations and consultancy services, as well as a Nutanix Champion Services Partner. With our experience in cloud transformation and automation, we are well placed to help with migrations between these technologies.



DURATION:

1 full day,
or 2 half-days



AUDIENCE:

Infrastructure
engineers,
application owners,
project managers



TYPE:

Consultant-lead,
virtual or onsite



WORKSHOP PREREQUISITES:

Basic Hyperflex
and Nutanix design
knowledge

WORKSHOP OUTLINE

SESSION

1

Migration Options and Strategies

- Typical “from to” migration scenarios
- The impact of business drivers on migration approach
- Migration strategies

SESSION

2

Migration Paths and Processes

- General prerequisites
- Feature compatibility
- Example migration paths for different scenarios
- Infrastructure-centric versus service-centric
- Complexity, timelines and effort

SESSION

3

Supporting Tools and Collateral

- Overview of vendor tools and migration documentation
- vMotion migrations, Nutanix Move, 3rd party migrations
- Additional migration automation

SESSION

4

Customer Landscape Assessment

- Review of existing customer hardware and applications
- Customer tooling and automation capabilities
- Alignment to service-centric migration strategy

SESSION

5

Common Risks and Pitfalls

- Common risks and pitfalls
- Alignment to migration approaches

SESSION

6

Migration Recommendations and Roadmap

- Summary of workshop findings
- High-level recommendations on approach
- Key customer risks
- Migration roadmap

WORKSHOP AGENDA

Session	Start-Stop Time*
1. Migration Options and Strategies	09:00 – 10:00
2. Migration Paths and Processes	10:00 – 11:30
3. Supporting Tools and Collateral	11:30 – 12:00
Lunch Break / Day-2	12:00 – 13:30
4. Customer Landscape Assessment	13:30 – 14:30
5. Common Risks and Pitfalls	14:30 – 15:30
6. Migration Recommendations and Roadmap	15:30 – 16:00

* Timings are estimates and will be adjusted to the requirements of the customer on the day. For 2 half-day workshops, session 4 – 6 will be held on the 2nd day (with adjusted timings).